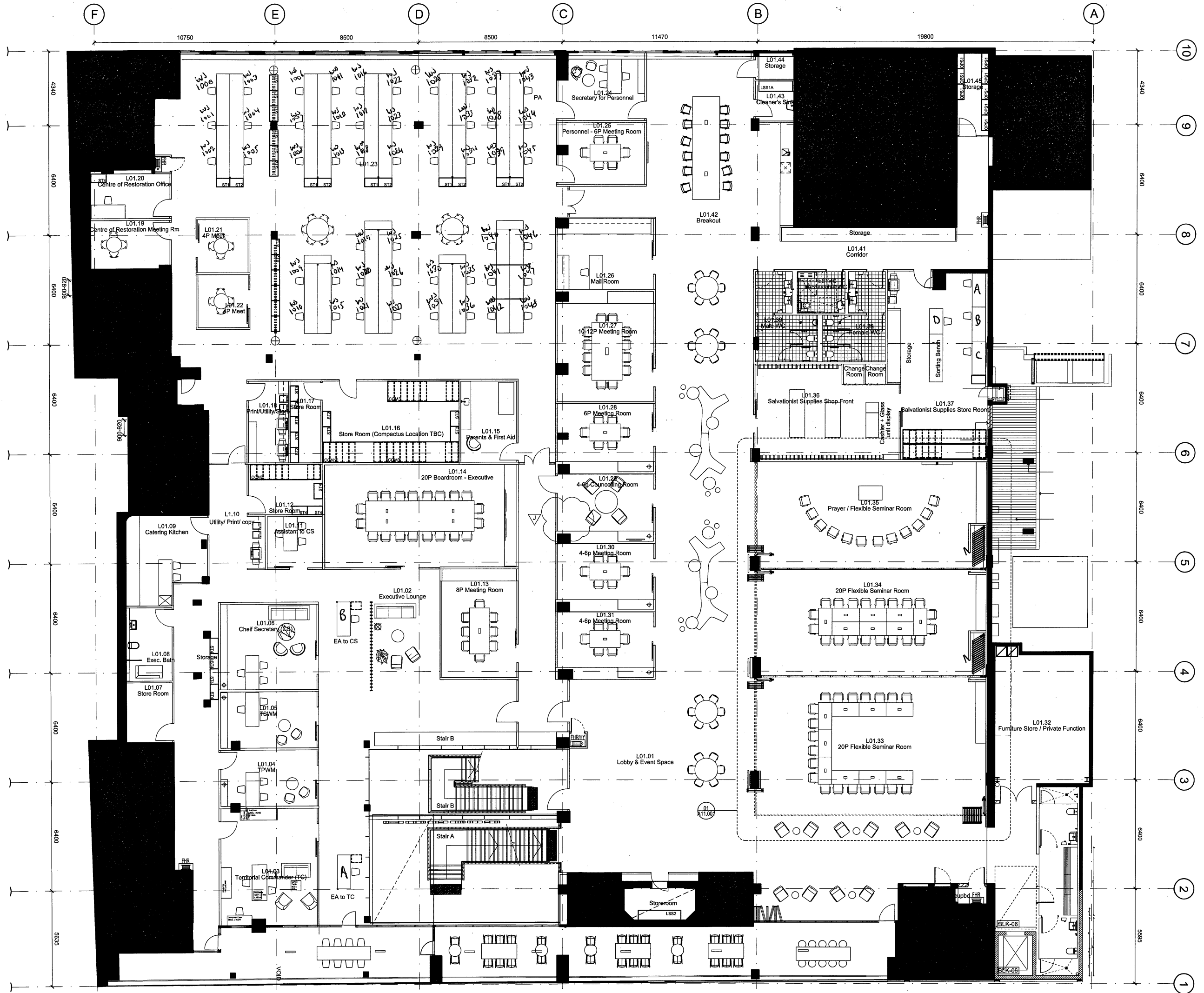


Check all dimensions and site conditions prior to commencement of any work, the purchase or ordering of any materials, fittings, plant, services or equipment and the preparation of shop drawings and/or the fabrication of any components.
Do not scale drawings - refer to figured dimensions only. Any discrepancies shall immediately be referred to the architect for clarification.
All drawings may not be reproduced or distributed without prior permission from the architect.



Revision	Date	Description	Initial	Checked
J	28.01.16	Rev. Furniture	MN	KP
I	18.01.16	Relocate Door	MN	KP
H	20.11.15	Rev. Floor plan	MN	KP
G	10.11.15	Rev. door schedule, wksth & storage	MN	KP
F	22.10.15	Storage/Workstation Update	RO	KP
E	15.10.15	Storage/Workstation & Cleaners Update	MN	KP
D	08.10.15	Storage/Workstation & Cleaners Update	MN	KP
C	29.09.15	RFI Update	MN	KP
B	14.09.15	Door Types & Joinery Updates	MN	KP
A	17.07.15	Issue for Construction	MN	KP

Salvation Army Workplace
261-265 Chalmers Street
Level 1 Plan

Scale	1:100 @ A1
Drawn	MN
Checked	KP
Project No.	S11763
Status	Construction
Plot Date	28/10/2016 12:42:40 PM
Plot File	S:\11700-11799\11763_salvationarmy_sydney\00_mhnicad\p... ...#GDA03.101\1.dwg
Drawing No.	[Revision]

A03.101[J]

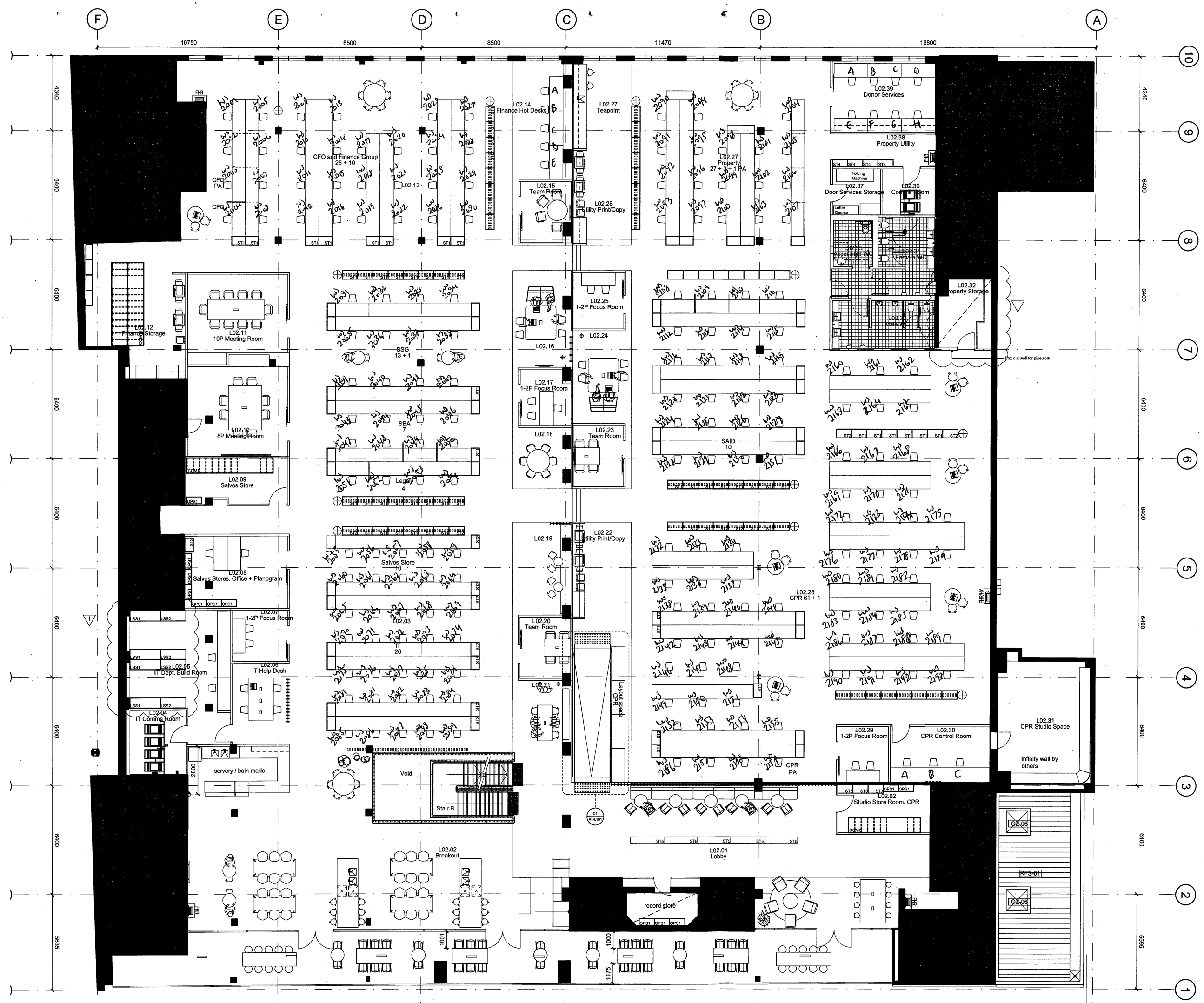
Sydney 43 Brisbane Street
Surry Hills NSW 2010 Australia
T 02 8354 5100 F 02 8354 5199
email syd@batesmart.com.au
http://www.batesmart.com.au

Melbourne 1 Nicholson Street
Melbourne VIC 3000 Australia
T 03 8664 6200 F 03 8664 6300
email mel@batesmart.com.au
http://www.batesmart.com.au

Bates Smart Pty Ltd ABN 70 004 999 400



Check all dimensions and site conditions prior to commencement of any work, the purchase or ordering of any materials, fittings, plant, services or equipment and the preparation of shop drawings and/or the fabrication of any components.
 Do not scale drawings - refer to figured dimensions only. Any discrepancies shall immediately be referred to the architect for clarification.
 All drawings may not be reproduced or distributed without prior permission from the architect.



Revision	Date	Description	Initial	Checked
I	28.01.16	Rev. Furniture	MN	KP
H	22.01.16	Rev. Workstation Layout and Furniture Rev. Stair	MN	KP
G	27.11.15	Rev. Floor plan Comms&Storage Room Update	RO	KP
F	22.10.15	Rev FF&E, plan and Storage Update	RO	KP
E	15.10.15	Fire Hydrant added	RM	KP
D	13.10.15	Added Infinity Wall	MN	KP
C	08.10.15	Rev FF&E, plan and Storage Update Removed Screen	MN	KP
B	14.09.15	Door Types & Design Changes	MN	KP
A	17.07.15	Issue for Construction	MN	KP

Salvation Army Workplace
 261-265 Chalmers Street
 Level 2 Plan

Scale	1:100 @ A1
Drawn	MN Checked KP
Project No.	S11763
Status	Construction
Plot Date	28/10/2016 12:42:52 PM
Plot File	S:\11700-11799\11763_salvationarmy_sydney01_main\cad\p... ...es\CD\A03.102\l.dwg
Drawing No.	[Revision]

A03.102[I]

Sydney 43 Brisbane Street
 Surry Hills NSW 2010 Australia
 T 02 8354 5100 F 02 8354 5199
 email syd@batesmart.com.au
 http://www.batesmart.com.au

Melbourne 1 Nicholson Street
 Melbourne VIC 3000 Australia
 T 03 8664 6200 F 03 8664 6300
 email melb@batesmart.com.au
 http://www.batesmart.com.au

Bates Smart Pty Ltd ABN 70 004 999 400



