

ITEM NAME:

THQ ON THE MOVE

SHIP TO:

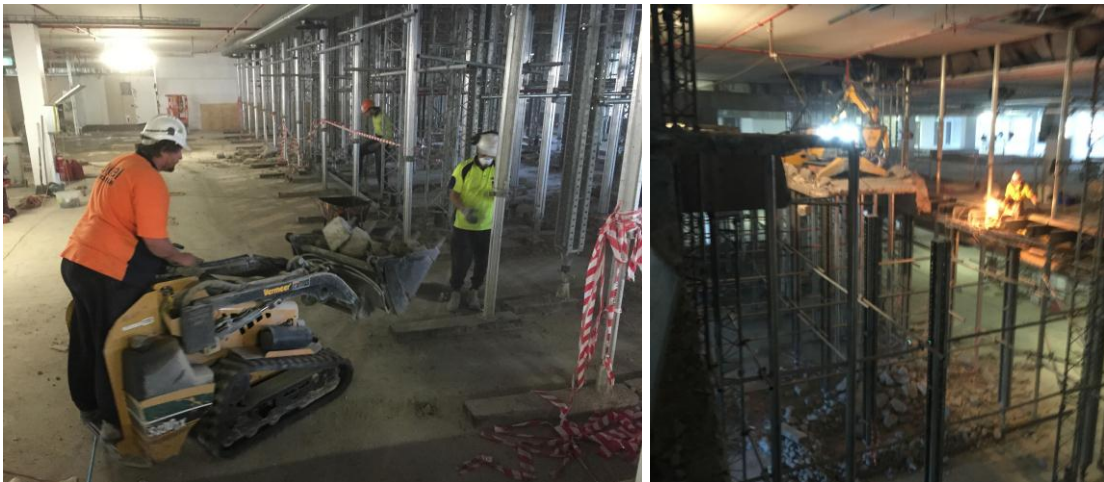
261-265 CHALMERS STREET
REDFERN NSW 2016



Project Update – How is our new building progressing?

Works

The demolition work to level 3 continues with 50% of the concrete removed. This is now on track for completion in 2 to 3 weeks.



Approvals

The Development Application (DA) has now been approved! We received an email copy of the DA from the Council on the 1st of June. We are now reviewing the conditions of DA and have commenced work on the requirements for our Construction Certificate.

Furniture

Tenders have not yet been finalised for the task chairs and desks, this is expected in the coming week, at which time a display will be set-up. Finalisation of the loose furniture is now underway with a small group being selected by the steering committee to review the selected furniture and make a final decision.

Aged Care Plus

Aged Care Plus are required to move out of their current office location. This move was unplanned and is occurring on 26 June 2015 at short notice. This has required a change to the original relocation plan for Aged Care Plus to move to Redfern. Two moves by Aged Care Plus within a short period of time will create significant challenges for maintaining business continuity. As such, Aged Care Plus will be remaining at their new office premises, located within the same suburb as their current offices, until 30 June 2016, thus relocating to Redfern later than previously planned.

ITEM NAME:

THQ ON THE MOVE

SHIP TO:

261-265 CHALMERS STREET
REDFERN NSW 2016



FAQs

Below are some questions we have received recently. These are being followed through and will be answered. If you have any other questions please talk to your representative on the Consultative Group so that we can have the opportunity to know your concerns and hopefully respond to them. Alternatively you can email them to thqrelocationenquiries@ae.salvationarmy.org

1. Will the phones be cordless?
2. Will everyone receive new computers?
3. Will adjustable desks be available for all personnel?
4. Will privacy screens (attached to computer screen) be available for those concerned about confidentiality?
5. Will everyone receive new chairs?
6. Are there sufficient multi-function printers for each floor? Will these have professional finishing – booklet finisher and fold, staple functionality etc.?
7. Will meeting rooms have video conferencing equipment?
8. Will personnel be able have personal items on their desk and partitions i.e. photos?

Getting to our new THQ

Walk

Redfern Train Station to new THQ – 11 minutes

Central Train Station to new THQ – 15 minutes

Bus

Buses stopping at Chalmers Street near Redfern St (4 minute walk to new THQ):

305 – Mascot to Railway Square

308 – Marrickville Metro to City

309 – Port Botany to City

310 – Eastgardens to City

343 – Kingsford to City

345 – Rosebery to Central

M20 – Botany to Gore Hill